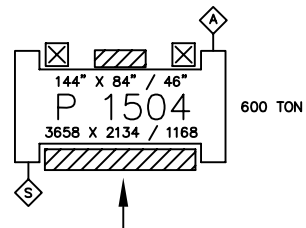
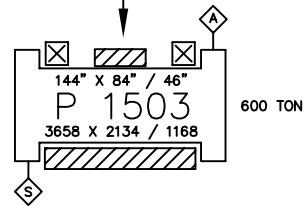
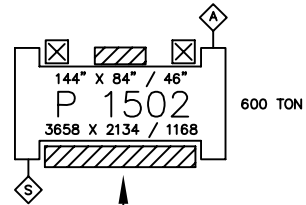
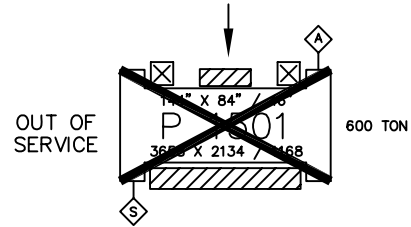
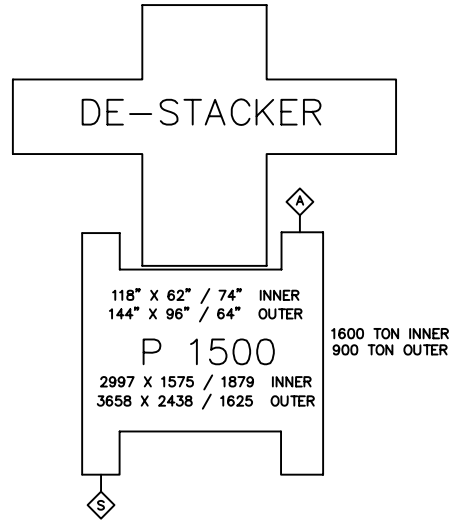


ARROWS INDICATE  
DIE LOADING DIRECTION



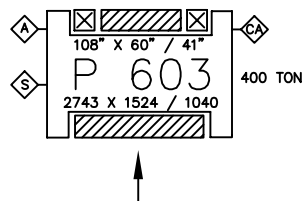
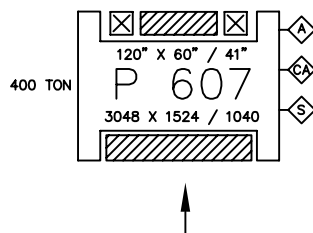
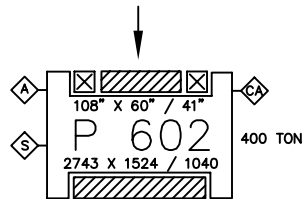
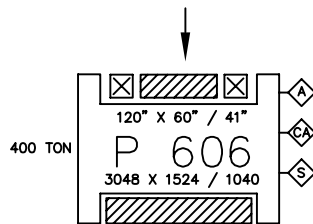
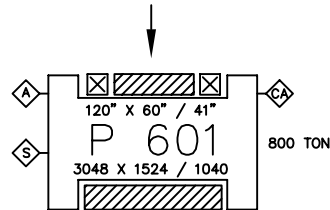
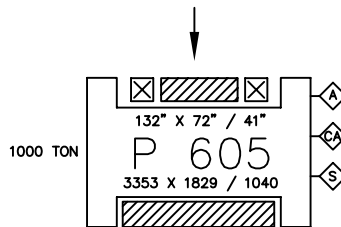
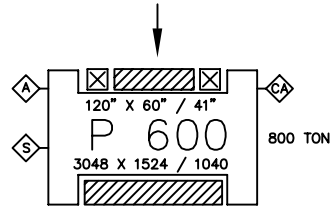
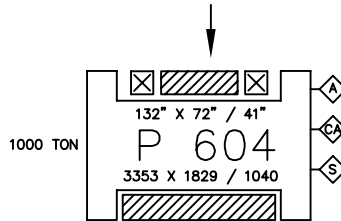
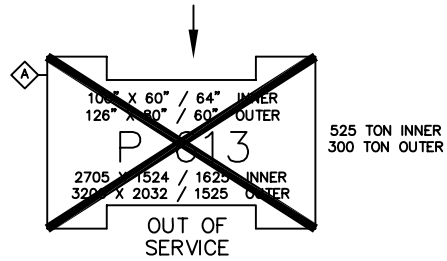
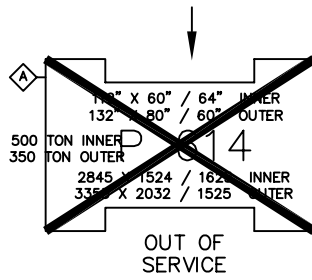
1600 LINE & 1500 LINE LAYOUT

- ◇ = SENSOR HOOK UP LOCATION
- ⊠ = OPERATOR / LOADER POSITION
- ▨ = SCRAP FALL AREA
- ◇ = AIR HOOK UP LOCATION

RAM R/L x F/B / TARGET SHUT HEIGHT  
BOLSTER DIMENSIONS ARE EQUAL  
TO THE LARGEST RAM DIMENSIONS.



ARROWS INDICATE DIE LOADING DIRECTION



- ☒ = OPERATOR / LOADER POSITION
- ▨ = SCRAP FALL AREA
- ◇ = AIR HOOK UP LOCATION
- ◇ = CYCLIC AIR HOOK UP LOCATION
- ◇ = SENSOR HOOK UP LOCATION

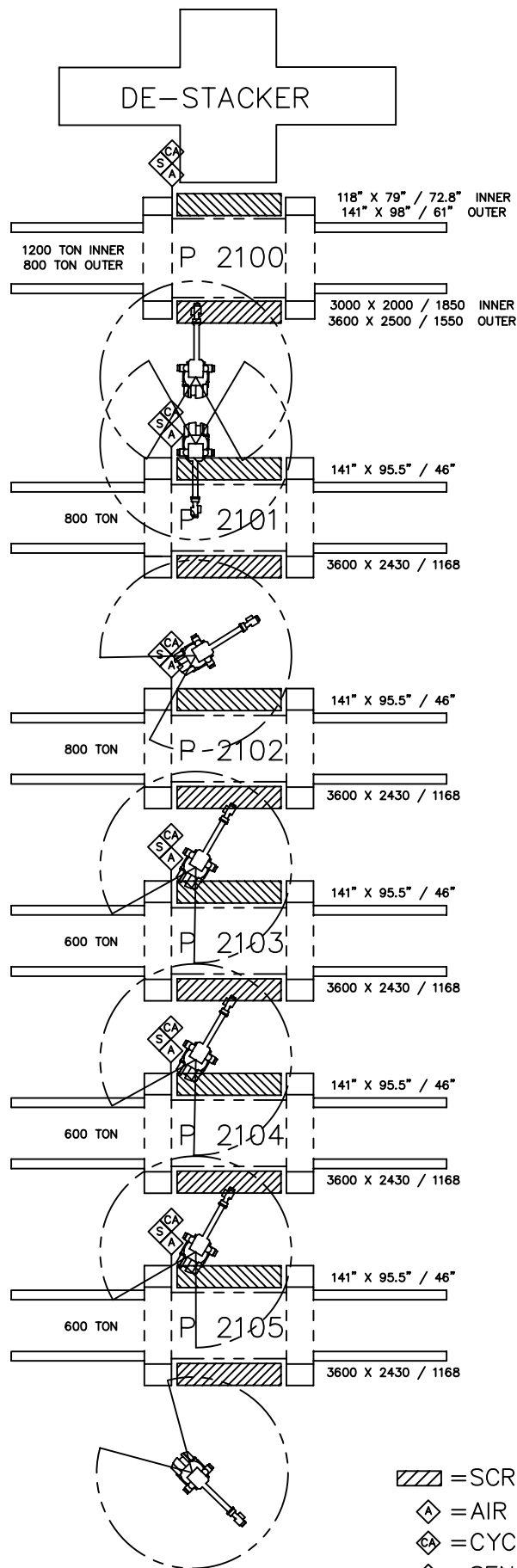
RAM R/L x F/B / TARGET SHUT HEIGHT  
BOLSTER DIMENSIONS ARE EQUAL TO THE LARGEST RAM DIMENSIONS.

614 LINE & 613 LINE LAYOUT



RAM R/L x F/B / TARGET SHUT HEIGHT

BOLSTER DIMENSIONS ARE EQUAL TO THE LARGEST RAM DIMENSIONS.

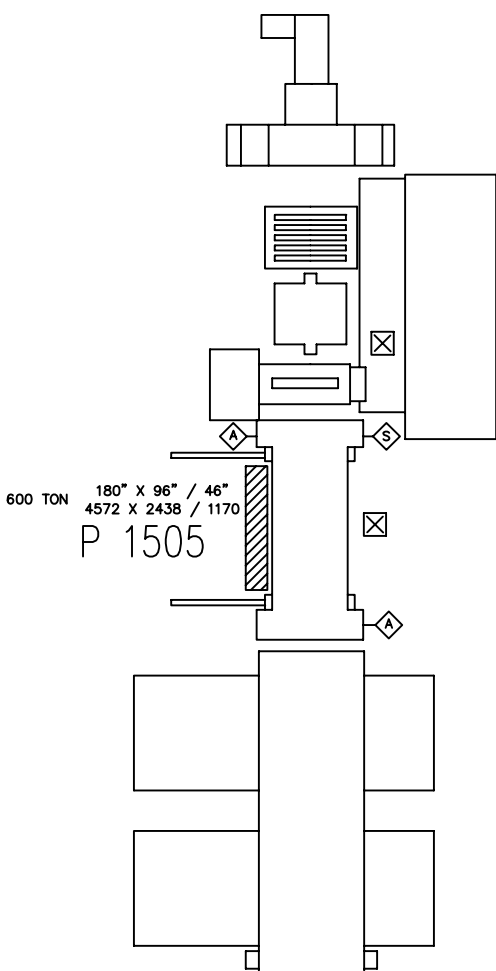
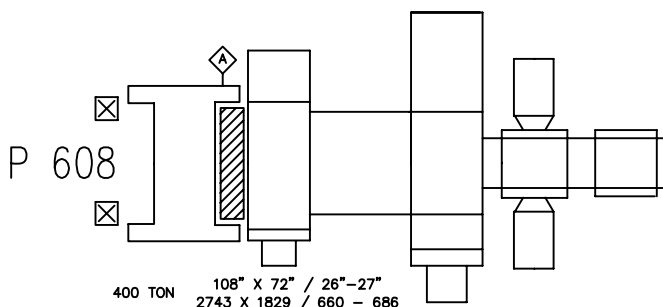


2100 LINE LAYOUT



RAM R/L x F/B / TARGET SHUT HEIGHT

BOLSTER DIMENSIONS ARE EQUAL TO THE LARGEST RAM DIMENSIONS.



COIL FED PRESS LAYOUT

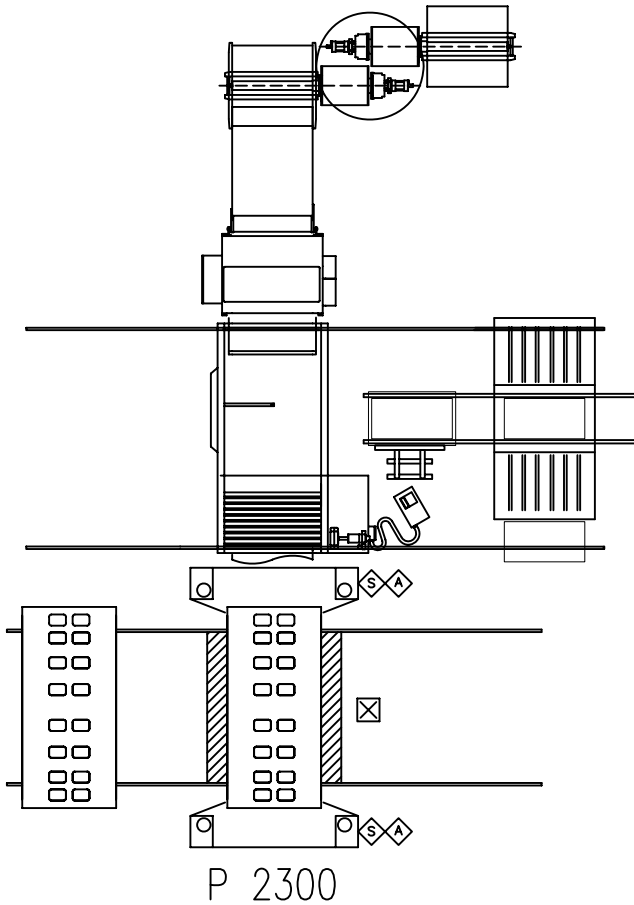
- ☒ = OPERATOR POSITION
- ▨ = SCRAP FALL AREA
- ◊ = AIR HOOK UP LOCATION
- ⊞ = CYCLIC AIR HOOK UP LOCATION
- ⊞ = SENSOR HOOK UP LOCATION



RAM R/L x F/B / TARGET SHUT HEIGHT

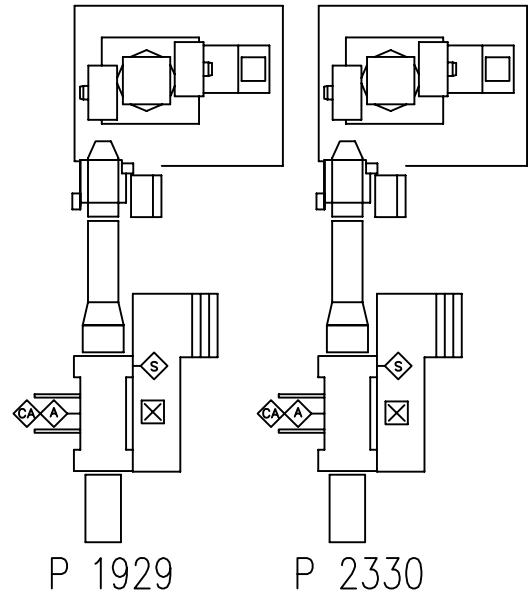
BOLSTER DIMENSIONS ARE EQUAL TO THE LARGEST RAM DIMENSIONS.

# PROGRESSIVE AND TRANSFER PRESS LAYOUT



1600 TON 180" X 84" / 44"  
4572 X 2133 / 1117

NOTE: PRESSES 1929 & 2330 ARE IDENTICAL TO EACH OTHER



400 TON 96" X 54" / 22"  
2438 X 1371 / 559

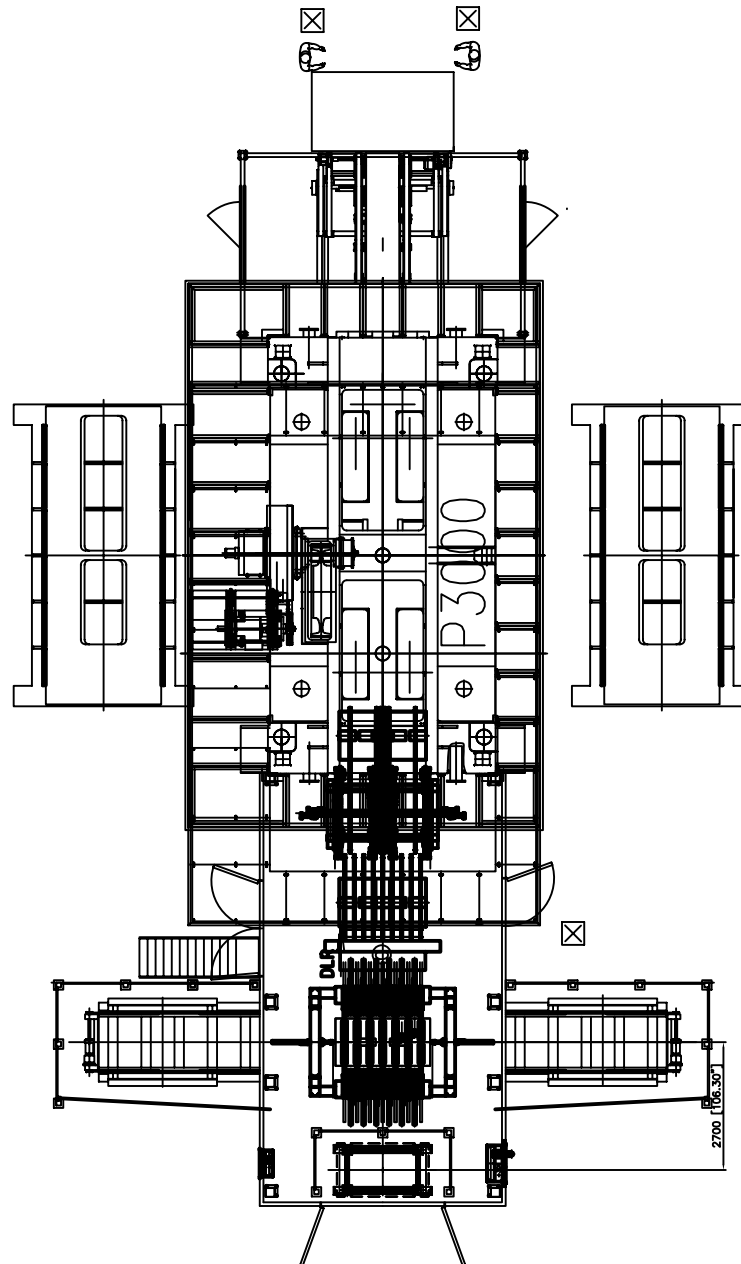
NOTE: PRESSES 1929, 2330, & 2300 ALL HAVE THROUGH THE BOLSTER SCRAP EXIT PROVISIONS.

- ⊠ = OPERATOR POSITION
- ▨ = SCRAP FALL AREA
- ◊ = AIR HOOK UP LOCATION
- ◈ = CYCLIC AIR HOOK UP LOCATION
- ◊ = SENSOR HOOK UP LOCATION



RAM R/L x F/B / TARGET SHUT HEIGHT  
BOLSTER DIMENSIONS ARE EQUAL  
TO THE LARGEST RAM DIMENSIONS.

# P3000 TRANSFER PRESS LAYOUT



NOTE: PRESS 3000  
ALL HAVE THROUGH THE BOLSTER  
SCRAP EXIT PROVISIONS.

- ⊠ = OPERATOR POSITION
- ▨ = SCRAP FALL AREA
- ◊A = AIR HOOK UP LOCATION
- ◊C = CYCLIC AIR HOOK UP LOCATION
- ◊S = SENSOR HOOK UP LOCATION