

Revision 4	Date 02-Feb-00	Page 2 of 11	Specification No. S 02.002
---------------	-------------------	-----------------	-------------------------------

PRESS INFORMATION

	Inner	Outer
Work Capacity	363 MT	N/A
Ram Size L/R – F/B	2743mm-1829mm	N/A
Ram Spacer Thickness	None	N/A
Length of Stroke	305mm	N/A
Slide Adjustment	457mm	N/A
Shut Height From Bolster S.D.A.U.	711mm	N/A
Target Die Height <i>(Measured From Bolster Plate)</i>	673mm	N/A
Bolster Size L/R – F/B	2743mm-1829mm	
Bolster Thickness	191mm	
Rolling Bolster	None	
Carriage Thickness	N/A	
Bolster Spacer	None	
Bolster Spacer Thickness	N/A	
Positive Knockout	Yes	
Quick Die Change Sub-Plates	None	
Sub-Plate Thickness	N/A	
Cushions (Number)	None	
Tons Each	N/A	
Tons Total	N/A	
Stroke	N/A	
Size L/R – F/B	N/A	
Distance From Bolster To Gibbs	177mm	
Distance Between Gibbs L/R	2794mm	
Strokes Per Minute	15-30	

Revision 4	Date 02-Feb-00	Page 3 of 11	Specification No. S 02.002
---------------	-------------------	-----------------	-------------------------------

PRESS INFORMATION (English)

	Inner	Outer
Work Capacity	400 Ton	N/A
Ram Size L/R – F/B	108”-72”	N/A
Ram Spacer Thickness	None	N/A
Length of Stroke	12”	N/A
Slide Adjustment	18”	N/A
Shut Height From Bolster S.D.A.U.	28”	N/A
Target Die Height <i>(Measured From Bolster Plate)</i>	26.5”	N/A
Bolster Size L/R – F/B	108”-72”	
Bolster Thickness	7.5”	
Rolling Bolster	None	
Carriage Thickness	N/A	
Bolster Spacer	None	
Bolster Spacer Thickness	N/A	
Positive Knockout	Yes	
Quick Die Change Sub-Plates	None	
Sub-Plate Thickness	N/A	
Cushions (Number)	None	
Tons Each	N/A	
Tons Total	N/A	
Stroke	N/A	
Size L/R – F/B	N/A	
Distance From Bolster To Gibbs	7”	
Distance Between Gibbs L/R	110”	
Strokes Per Minute	15-30	

Revision 4	Date 02-Feb-00	Page 4 of 11	Specification No. S 02.002
---------------	-------------------	-----------------	-------------------------------

AUTOMATION DEVICES USED

COIL LINE

Coil Feeder	Yes
Material Thickness vs. Material Width	2.35mm x 1830mm
Feed Pitch Peek Velocity	N/A
Coil Inner Diameter (Max. & Min.)	711mm & 460mm
Coil Outer Diameter (Max.)	1830mm
Material Feed Height	457mm
<i>(From Top Of Bolster)</i>	
Max. Coil Weight	267 kN
Roll Lift	Yes
Uncoil	Over Top

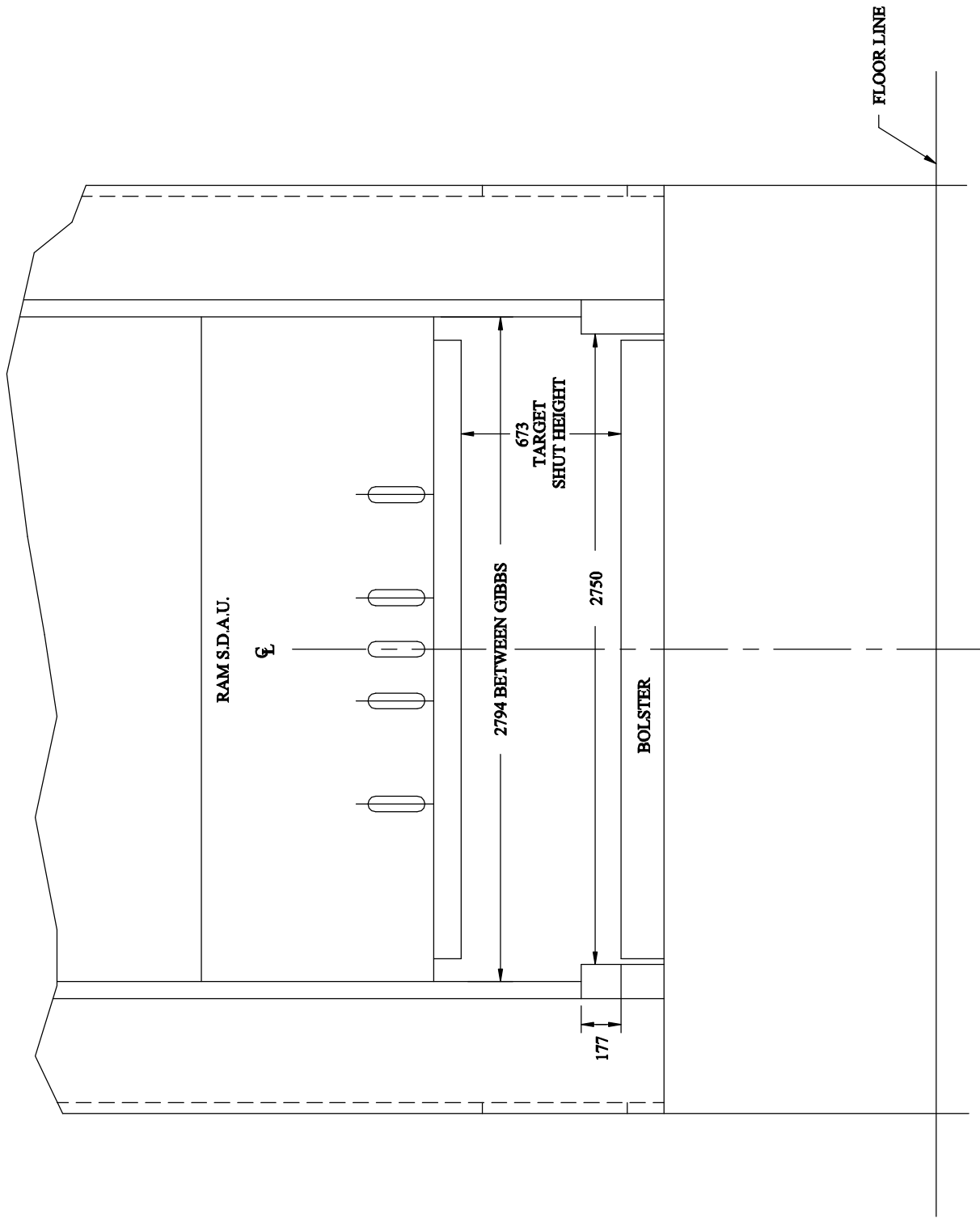
Revision 4	Date 02-Feb-00	Page 5 of 11	Specification No. S 02.002
---------------	-------------------	-----------------	-------------------------------

PRESS INFORMATION GENERAL

Comments:

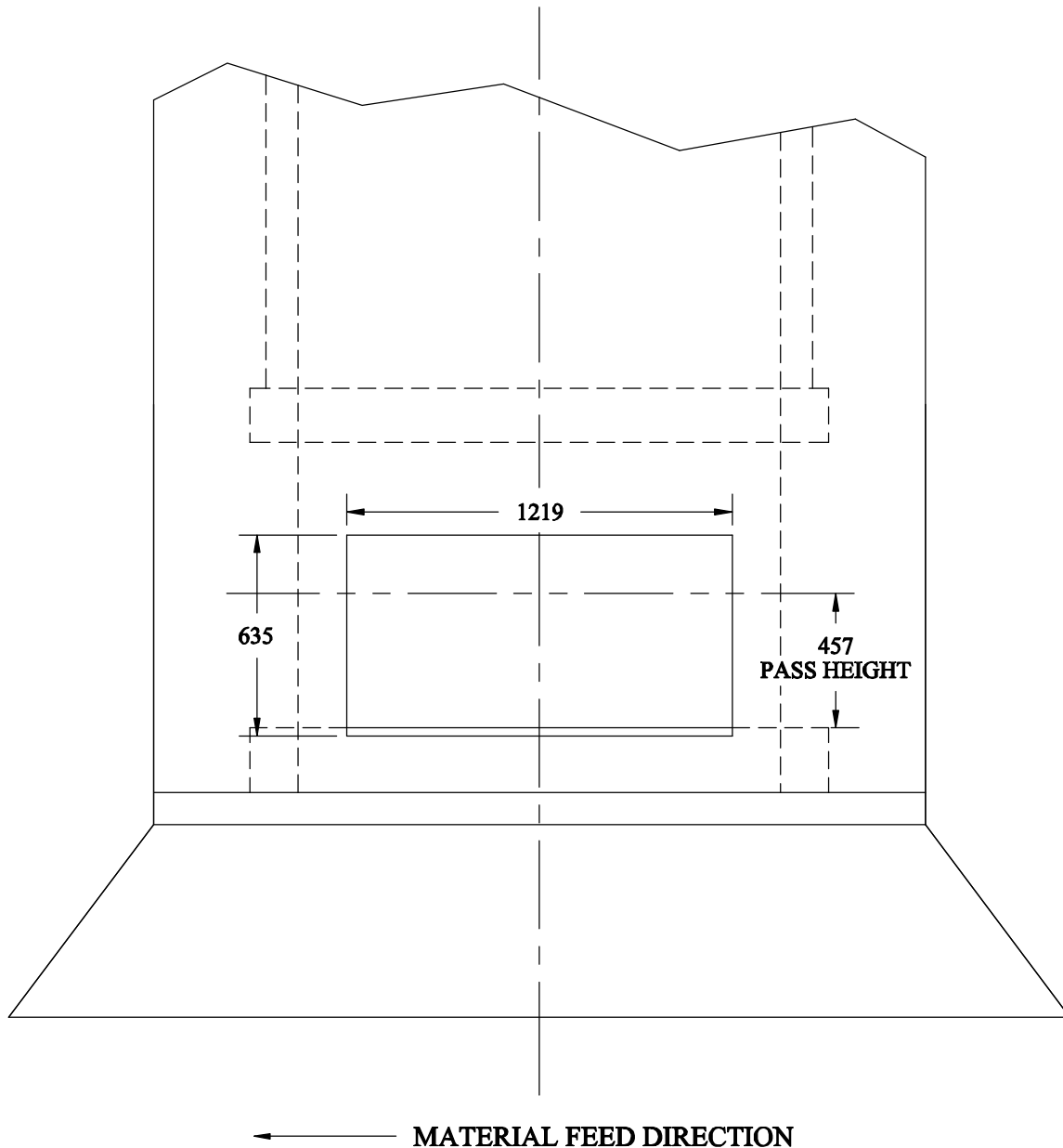
- 1) Scrap or parts may pass through the windows in the sides the press with written S.S.P. approval only.

Revision 4	Date 02-Feb-00	Page 6 of 11	Specification No. S02.002
---------------	-------------------	-----------------	------------------------------



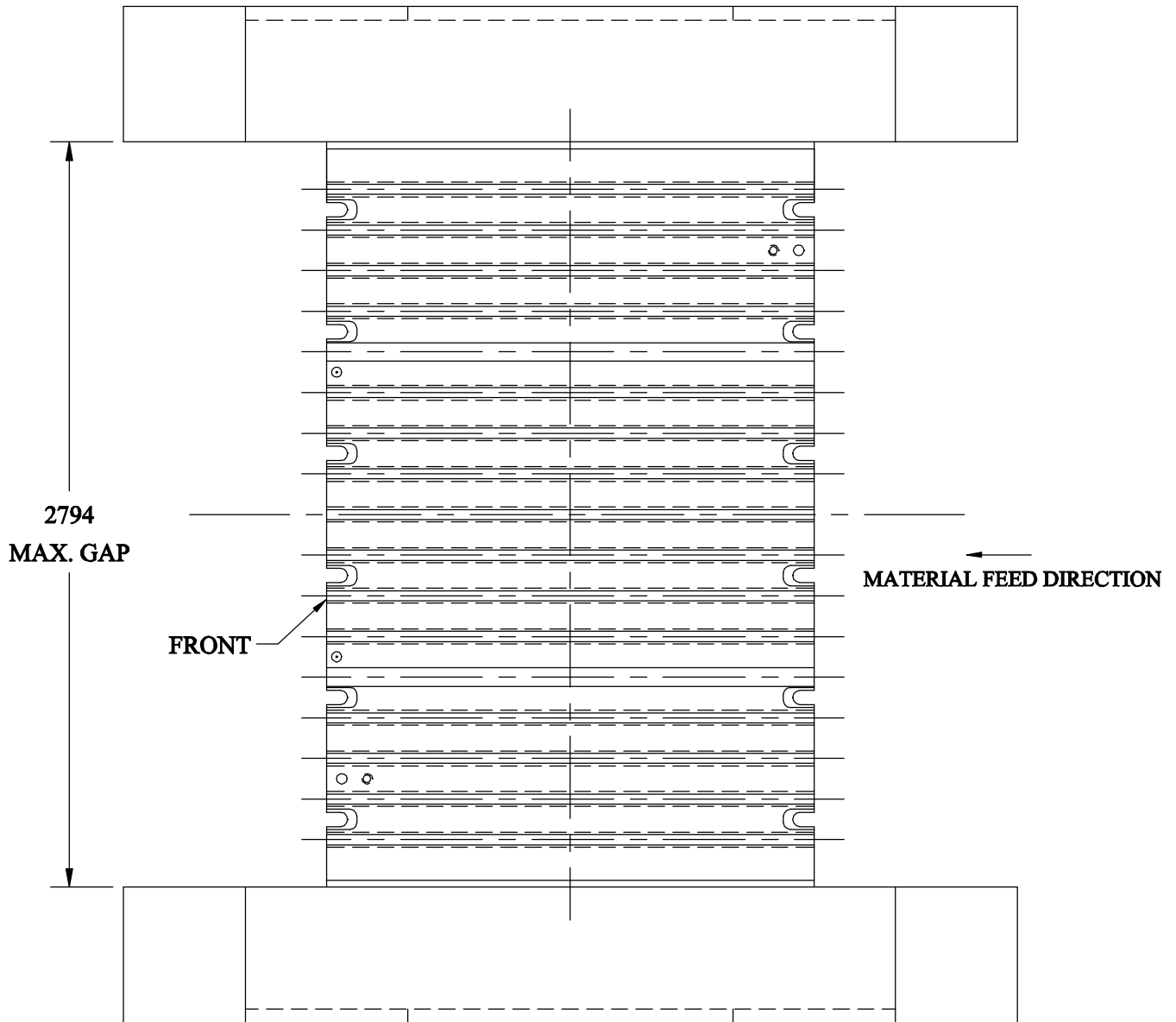
FRONT VIEW

Revision 4	Date 02-Feb-00	Page 7 of 11	Specification No. S02.002
---------------	-------------------	-----------------	------------------------------



SIDE VIEW

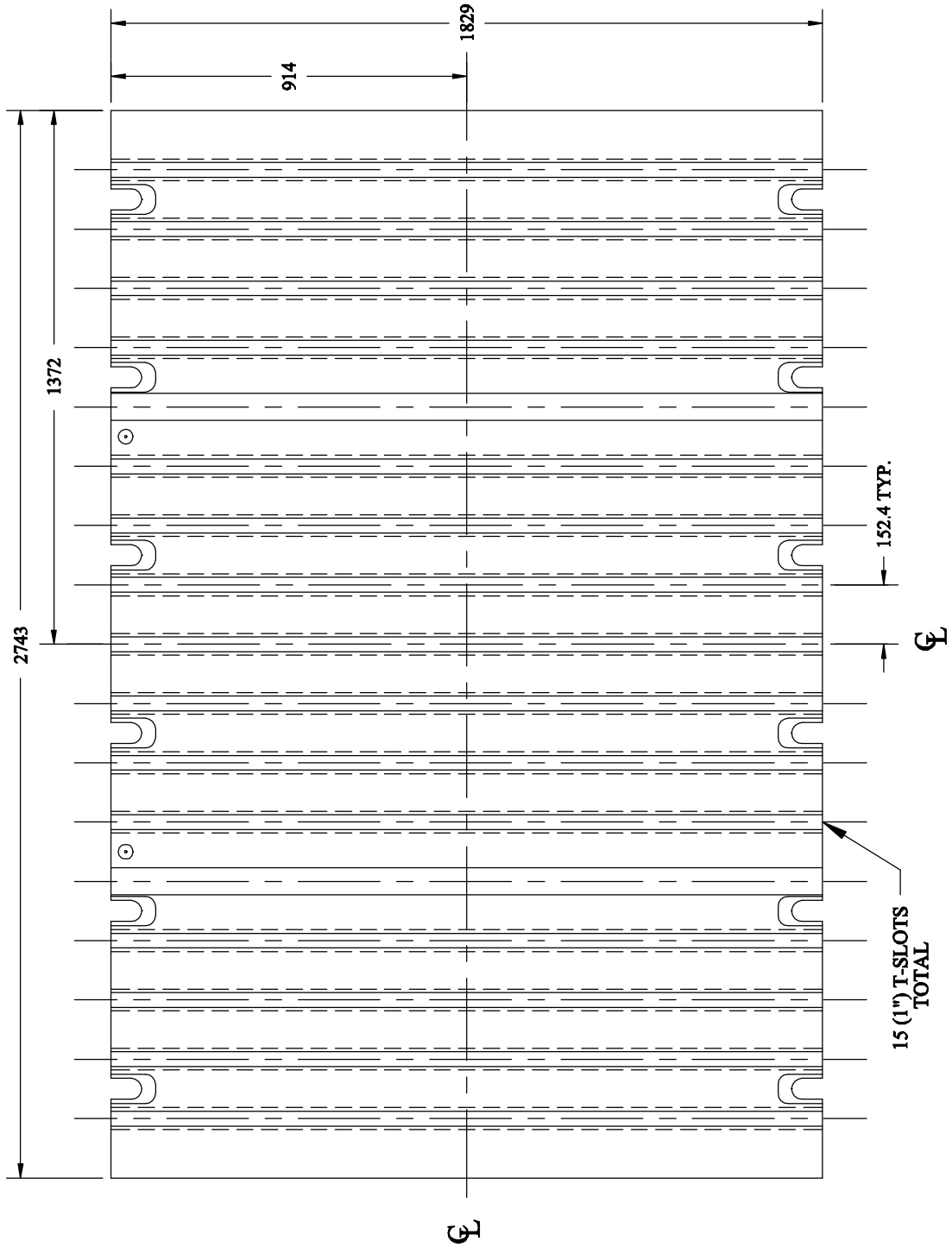
Revision 4	Date 02-Feb-00	Page 8 of 11	Specification No. S02.002
----------------------	--------------------------	------------------------	-------------------------------------



TOP VIEW

Revision 4	Date 02-Feb-00	Page 9 of 11	Specification No. S02.002
---------------	-------------------	-----------------	------------------------------

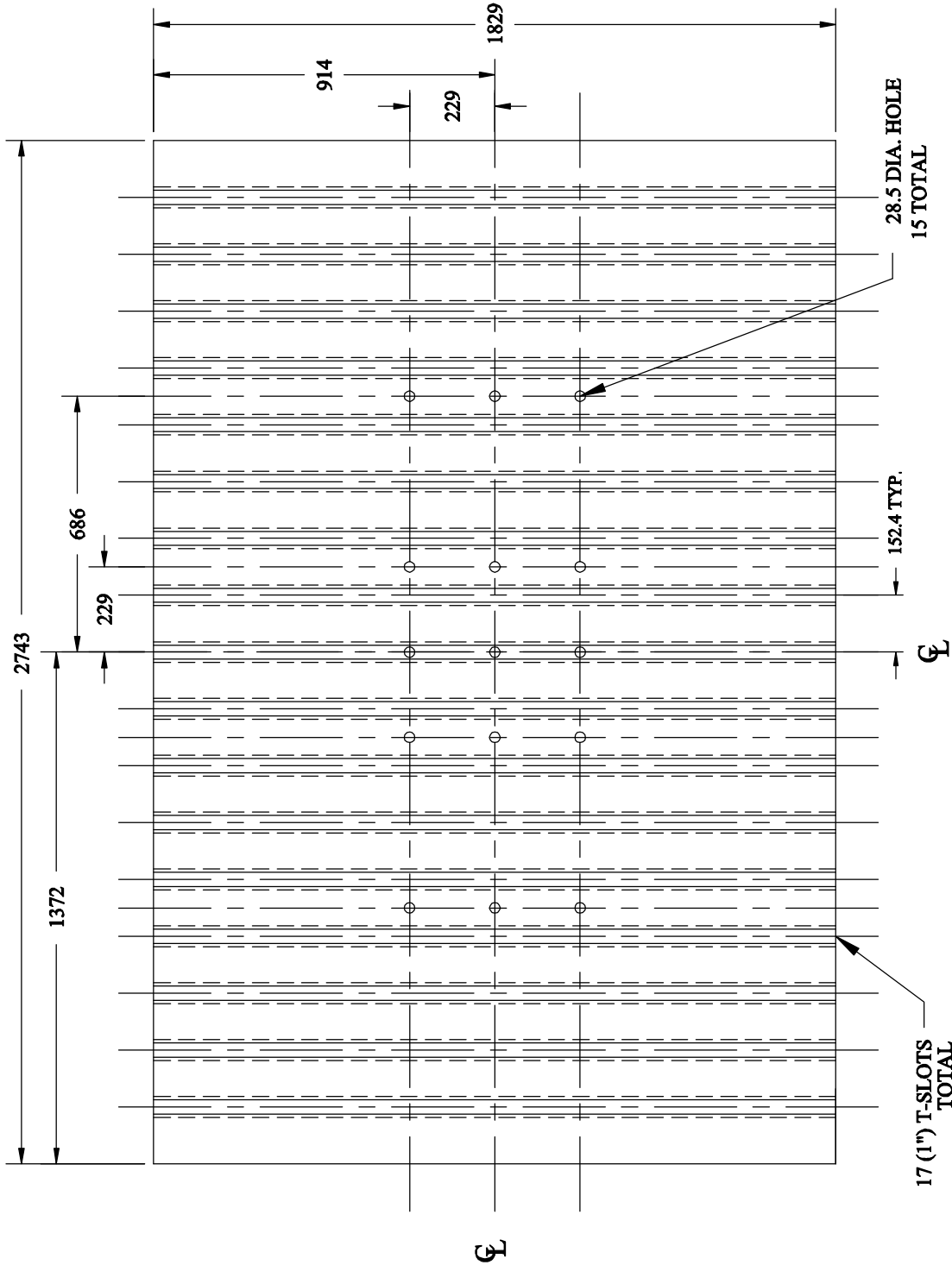
NOTE: ALL T-SLOTS ARE SYMMETRICAL ABOUT THE CENTERLINE



BOLSTER PLATE

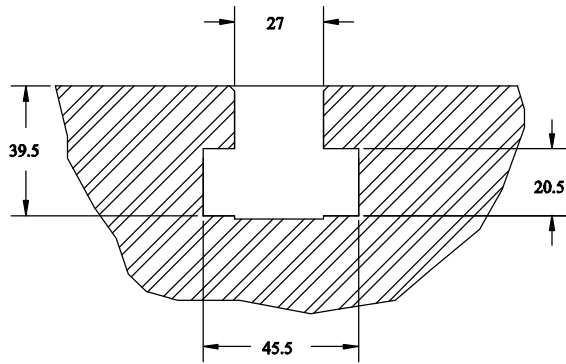
Revision 4	Date 02-Feb-00	Page 10 of 11	Specification No. S02.002
---------------	-------------------	------------------	------------------------------

NOTE: ALL T-SLOTS AND HOLES ARE SYMMETRICAL ABOUT THE CENTERLINE

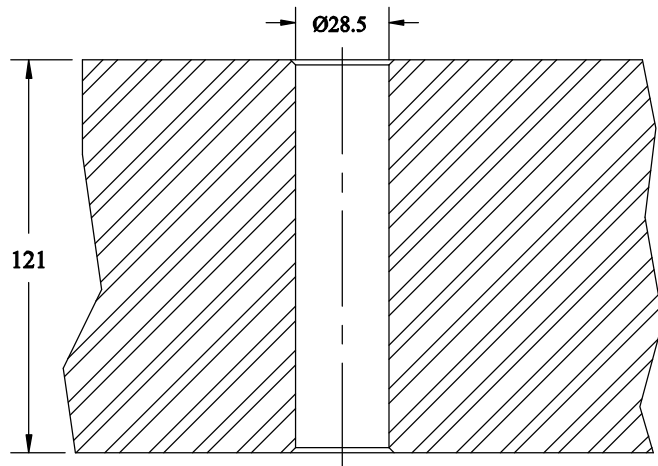


RAM FACE

Revision 4	Date 02-Feb-00	Page 11 of 11	Specification No. S02.002
----------------------	--------------------------	-------------------------	-------------------------------------



SECTION OF
T-SLOT



SECTION OF
RAM KNOCKOUT
HOLE

SECTIONS