

Revision 4	Date 07-Feb-00	Page 2 of 10	Specification No. S 02.007
---------------	-------------------	-----------------	-------------------------------

PRESS INFORMATION

	Inner	Outer
Work Capacity	363 MT	N/A
Ram Size L/R – F/B	2743mm-1524mm	N/A
Ram Spacer Thickness	None	N/A
Length of Stroke	406mm	N/A
Slide Adjustment	457mm	N/A
Shut Height From Bolster S.D.A.U.	1067mm	N/A
Target Die Height <i>(Measured From Bolster Plate)</i>	1040mm	N/A
Bolster Size L/R – F/B	2743mm-1524mm	
Bolster Thickness	191mm	
Rolling Bolster	None	
Carriage Thickness	N/A	
Bolster Spacer	None	
Bolster Spacer Thickness	N/A	
Positive Knockout	None	
Quick Die Change Sub-Plates	None	
Sub-Plate Thickness	N/A	
Cushions (Number)	Yes (2)	
Tons Each	41 MT @ 689.5 kPa	
Tons Total	82 MT @ 689.5 kPa	
Stroke	210mm	
Size L/R – F/B	2 @ 1130mm x 978mm	
Distance From Bolster To Gibbs	546mm	
Distance Between Gibbs L/R	2794mm	
Strokes Per Minute	20	

Revision 4	Date 07-Feb-00	Page 3 of 10	Specification No. S 02.007
---------------	-------------------	-----------------	-------------------------------

PRESS INFORMATION (English)

	Inner	Outer
Work Capacity	400 Ton	N/A
Ram Size L/R – F/B	108”-60”	N/A
Ram Spacer Thickness	None	N/A
Length of Stroke	16”	N/A
Slide Adjustment	18”	N/A
Shut Height From Bolster S.D.A.U.	42”	N/A
Target Die Height <i>(Measured From Bolster Plate)</i>	41”	N/A
Bolster Size L/R – F/B	108”-60”	
Bolster Thickness	7.5”	
Rolling Bolster	None	
Carriage Thickness	N/A	
Bolster Spacer	None	
Bolster Spacer Thickness	N/A	
Positive Knockout	None	
Quick Die Change Sub-Plates	None	
Sub-Plate Thickness	N/A	
Cushions (Number)	Yes (2)	
Tons Each	45 Tons @ 100 p.s.i.	
Tons Total	90 Tons @ 100 p.s.i.	
Stroke	8.25”	
Size L/R – F/B	2 @ 44.5”-38.5”	
Distance From Bolster To Drip Pots	21.5”	
Distance Between Gibbs L/R	110”	
Strokes Per Minute	20	

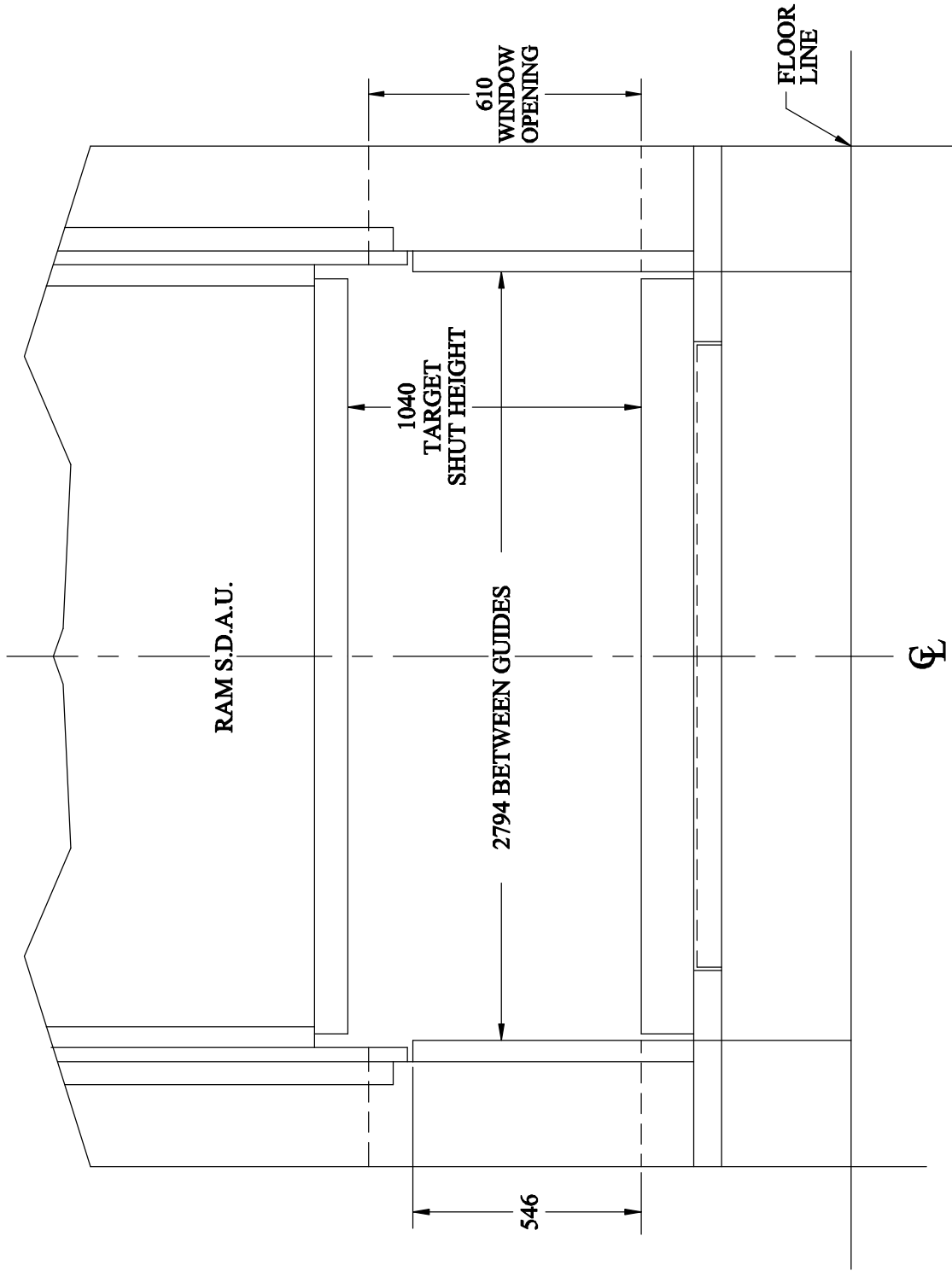
Revision 4	Date 07-Feb-00	Page 4 of 10	Specification No. S 02.007
---------------	-------------------	-----------------	-------------------------------

PRESS INFORMATION GENERAL

Comments:

- 1) Dies are to be equipped with an automatic part ejection device. The parts must be ejected out the back of the press onto the conveyer belt.
- 2) The part ejection device is to be mechanically actuated unless approved by S.S.P. If cylinders are to be used, no part of the cylinders are to enter the into the die working area.
- 3) The part ejection unit is to be equipped with a proximity sensor in order to prevent the press from cycling while it is in the extended position.

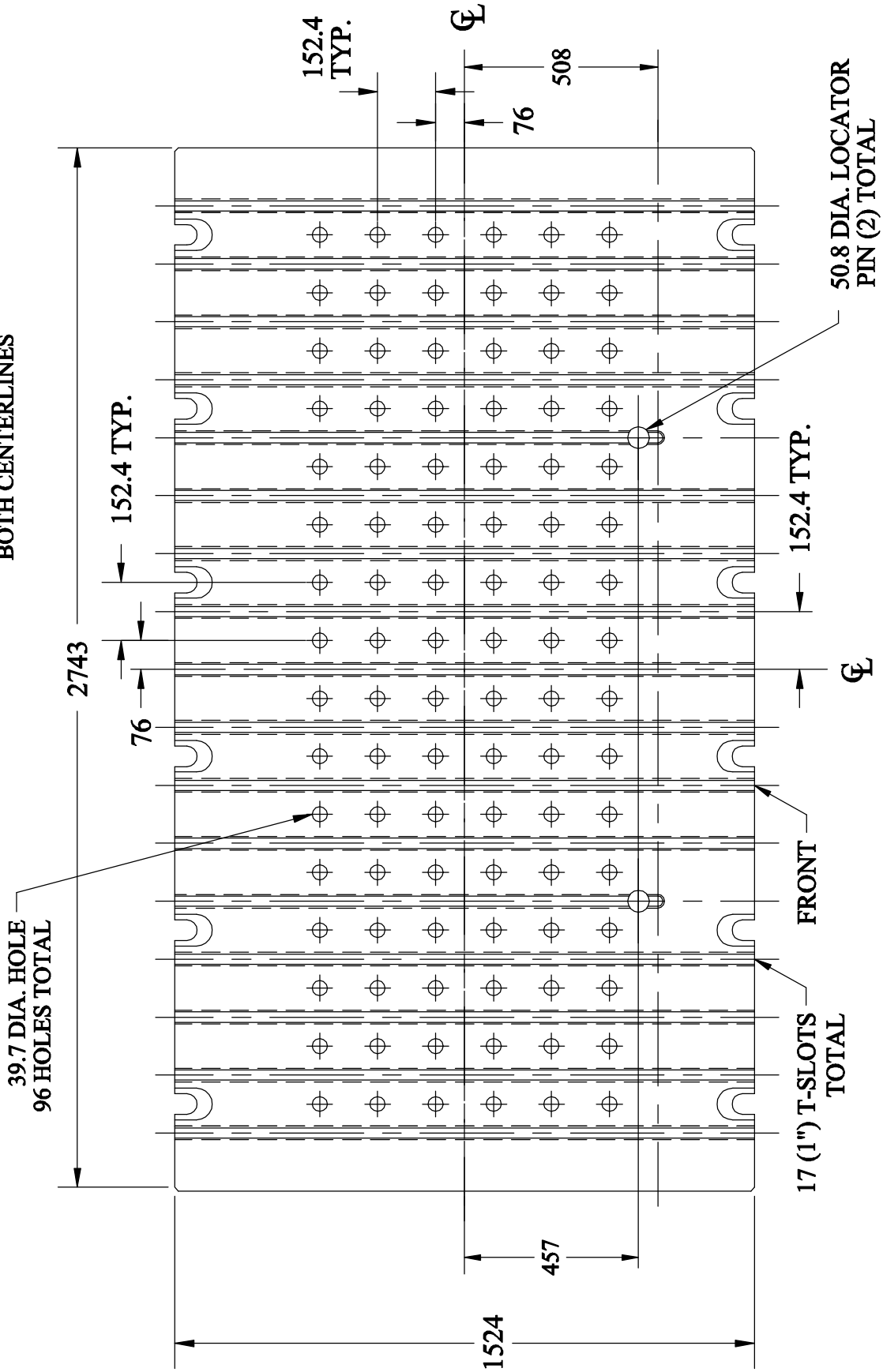
Revision 4	Date 07-Feb-00	Page 5 of 10	Specification No. S02.007
---------------	-------------------	-----------------	------------------------------



FRONT VIEW

Revision 4	Date 07-Feb-00	Page 6 of 10	Specification No. S02.007
---------------	-------------------	-----------------	------------------------------

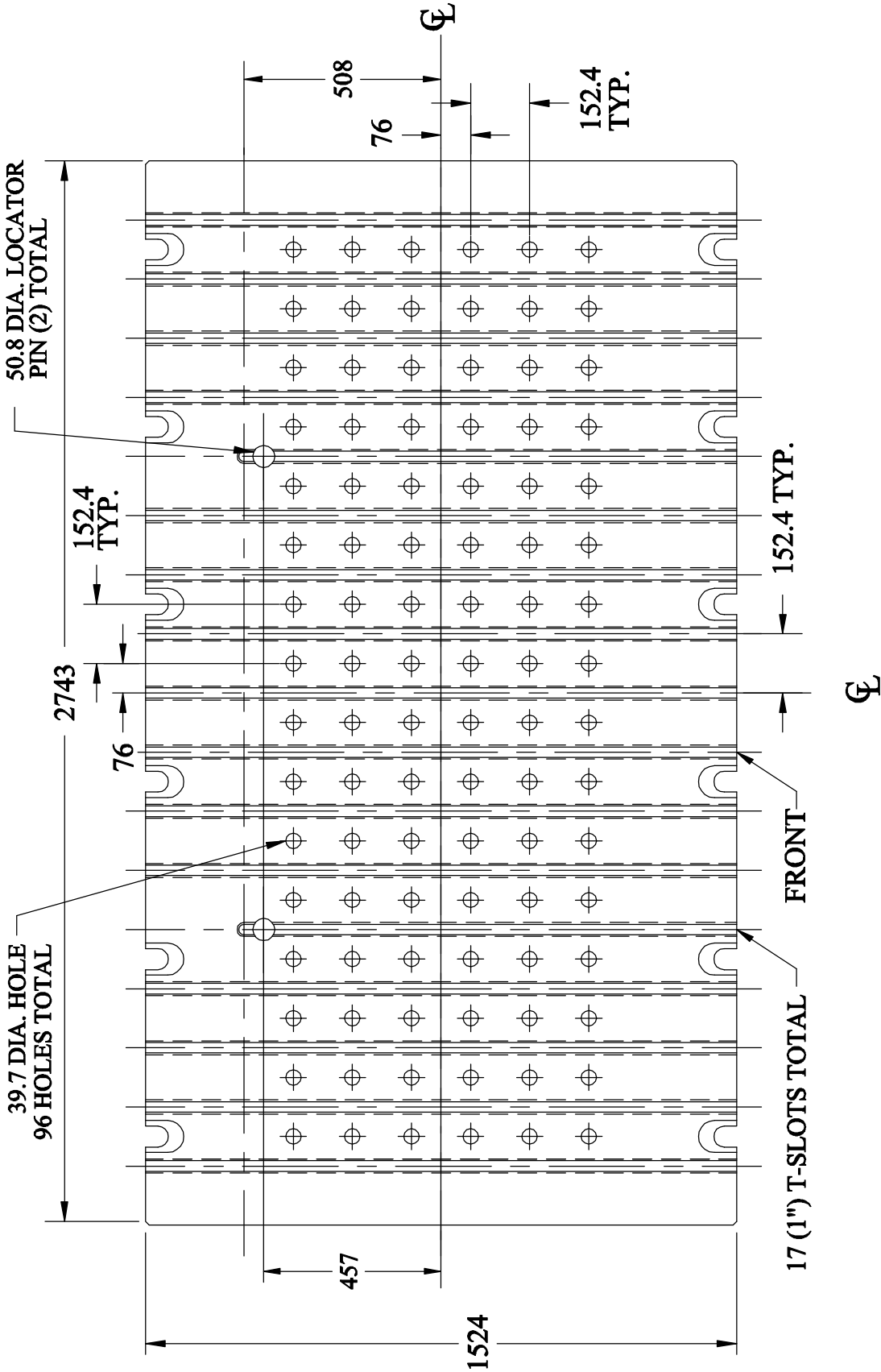
NOTE: ALL T-SLOTS AND HOLES ARE SYMMETRICAL ABOUT BOTH CENTERLINES



BOLSTER PLATE (PRESS 603)

Revision 4	Date 07-Feb-00	Page 7 of 10	Specification No. S02.007
---------------	-------------------	-----------------	------------------------------

NOTE: ALL T-SLOTS AND HOLES ARE SYMMETRICAL ABOUT BOTH CENTERLINES

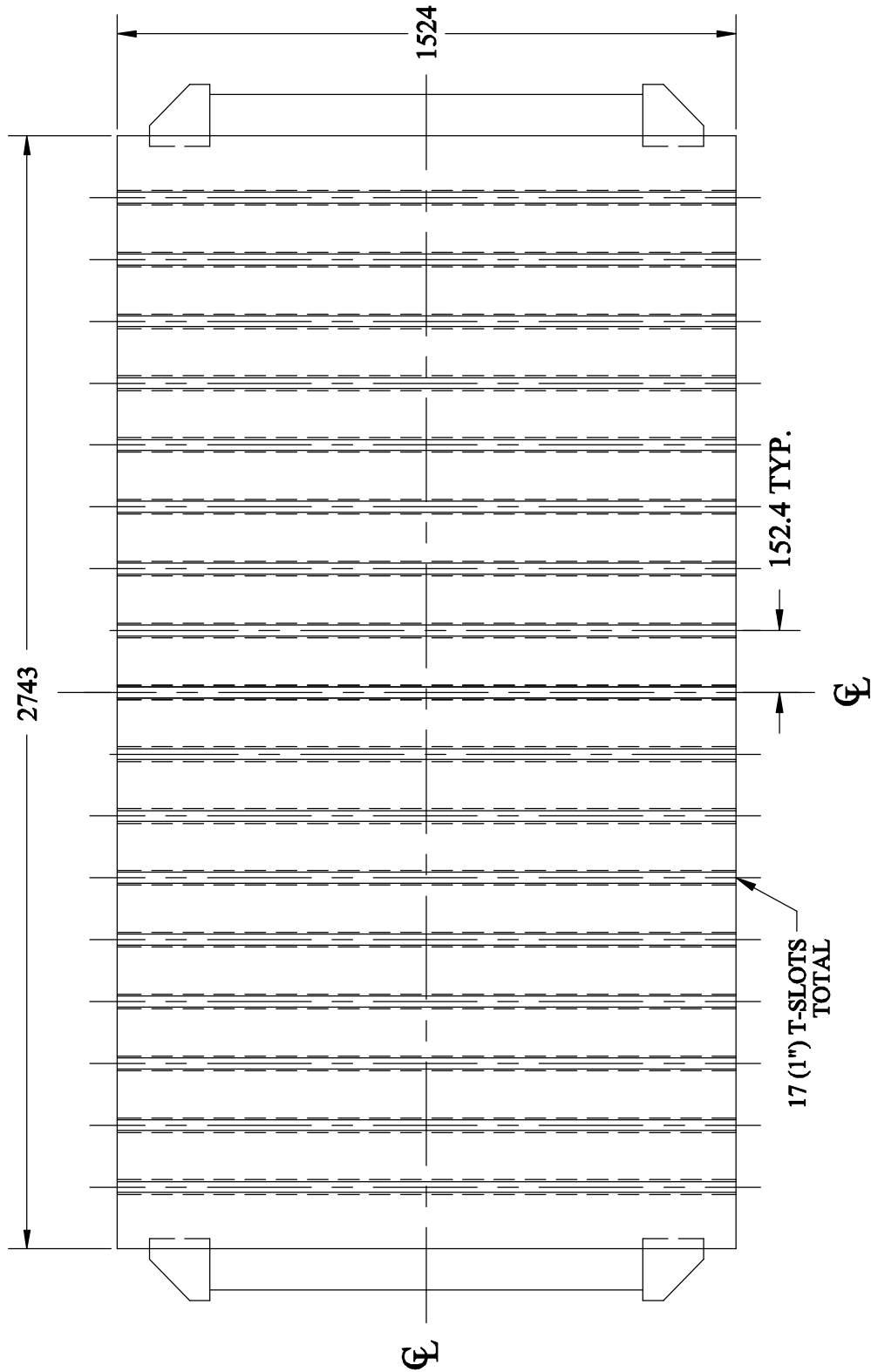


BOLSTER PLATE

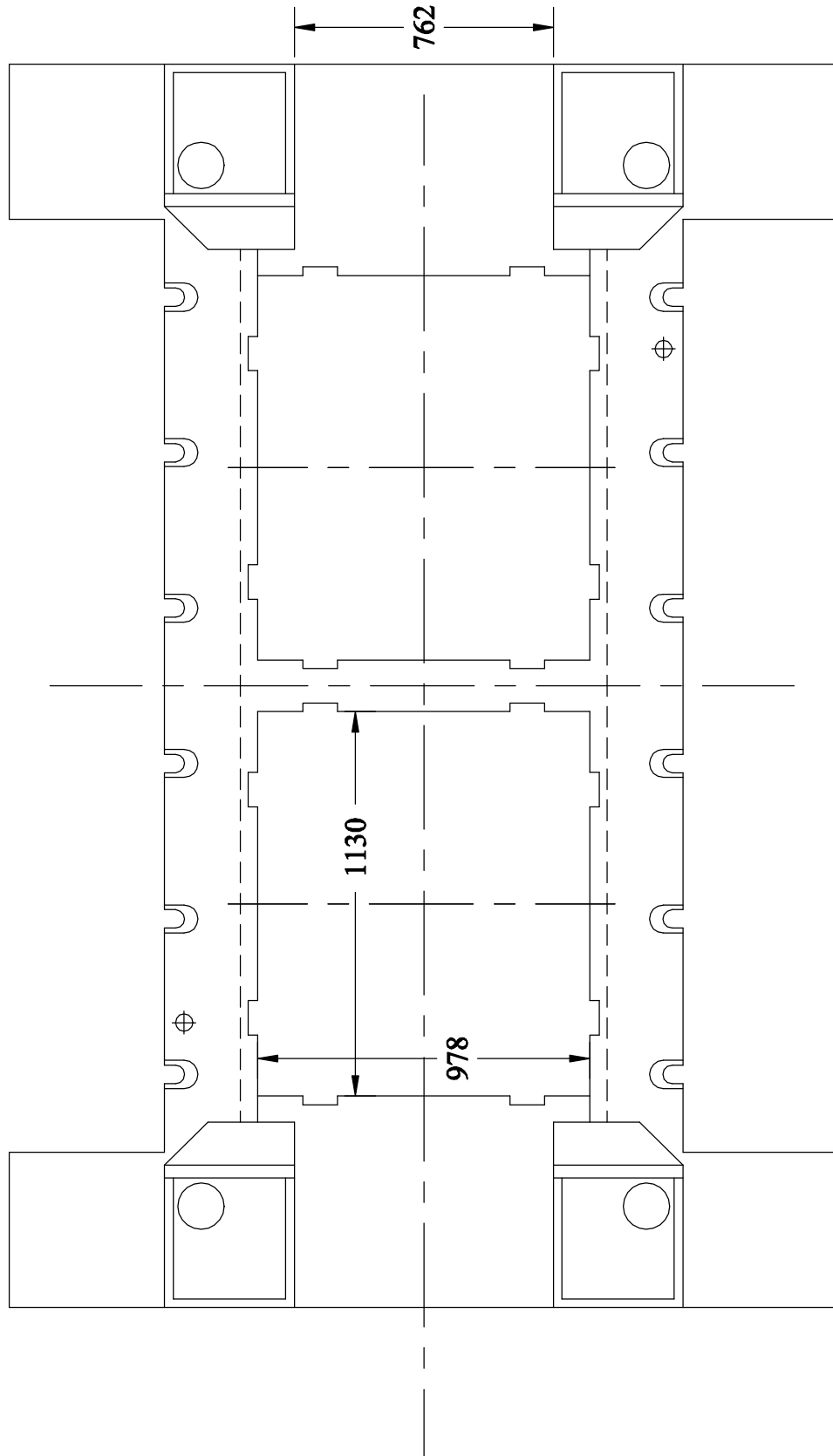
(PRESS 602)

Revision 4	Date 07-Feb-00	Page 8 of 10	Specification No. S02.007
---------------	-------------------	-----------------	------------------------------

NOTE: ALL T-SLOTS AND HOLES
ARE SYMMETRICAL ABOUT
BOTH CENTERLINES

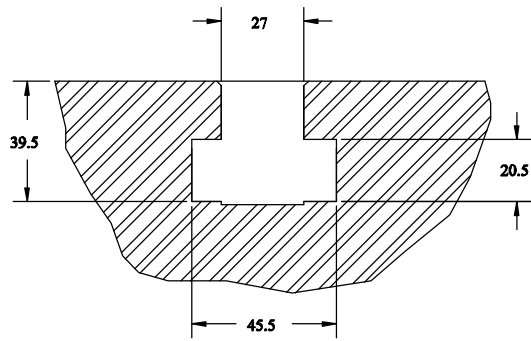


RAM FACE

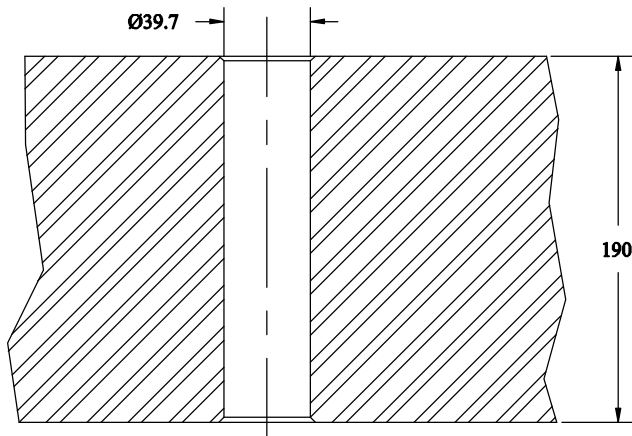


TOP VIEW
(CUSHION LAYOUT)

Revision 4	Date 07-Feb-00	Page 10 of 10	Specification No. S02.007
----------------------	--------------------------	-------------------------	-------------------------------------



**SECTION OF
1" T-SLOT**



**SECTION OF
CUSHION PIN
HOLE**

SECTIONS