

PRESS SPECIFICATION

S02.011

P2883 (WAS 1600)

Page:

1

of

9

Author:
J Martin

Reviewer
R Grimes

Approver
F Rutkowski

Issue Date:
24-Jan-2008

Rev. No.:
1

REASON FOR REVISION

- 0 - Original issue
- 1 - New format and dual dimensioning
- 2 -
- 3 -
- 4 -
- 5 -

GENERAL PRESS INFORMATION

1. All jobs for this press line should be processed in five dies or less.
Any deviation requires written authorization from SSP

2. Parts can be turned over (180 degrees max.) between press 2883 and press 1601 using a floor mounted FLEX-4.10 programmable transfer system.
The FLEX-4.10 is a four axis system featuring:
 - a. 82.68" [2100mm] programmable horizontal travel.
 - b. 7.87" [200mm] manual height adjustment.
 - c. +/- 10 degrees of manual gripper head adjustment.
 - d. 360 degrees of programmable part tip (F/B)

3. Pass-line and orientation are not to change throughout the press line.

PRESS SPECIFICATION**S02.011****P2883 (WAS 1600)**

Page:

2

of

9

Author:
J MartinReviewer
R GrimesApprover
F RutkowskiIssue Date:
24-Jan-2008Rev. No.:
1**PRESS INFORMATION ENGLISH [METRIC]**

Work Capacity	2000 Tons [1815MT]	
	Press capacity at 1/2" before DBC (Dead Bottom Center)	
Ram Size	144"-96" [3658mm-2438.4mm]	
Ram Spacer Thickness	None	
Length of Stroke	36" [914.4mm]	
Slide Adjustment	24" [609.6mm]	
Shut Height S.D.A.U. (From Q.D.C.)	57" [1448mm]	
Target Die Height (From Q.D.C.)	46" [1168.4mm]	
Bolster Size L/R-F/B	144"-96" [3658mm-2438.4mm]	
Bolster Thickness	12" [304.8mm]	
Q.D.C. Plate Thickness	2.88" [73mm]	
Rolling Bolster	No	
Carriage Thickness	N/A	
Bolster Spacer	No	
Bolster Spacer Thickness	0	
Positive Knock-Out	None	
Quick Die Change	Yes	
Cushions	10 Pascal Manual Clamps No (Prevision for Cushions)	Designed for 3" Shoe
Stroke	0"	
Quantity at Size L/R-F/B	None	
Dist. from Bolster to Drip Pots	35.13" [893.7mm]	
Distance Between Gibbs L/R	163" [4140.2]	
Strokes Per Minute	6-18	

PRESS SPECIFICATION**S02.011****P2883 (WAS 1600)**

Page:

3

of

9

Author:
J MartinReviewer
R GrimesApprover
F RutkowskiIssue Date:
24-Jan-2008Rev. No.:
1**AUTOMATION DEVICES USED****LOADER**

Destacker / Rollcoater / Loader	Yes
Max. Sheet Thickness	.059" [1.52mm]
Min. Sheet Thickness	.025" [.64mm]
Max. Sheet Size L/R - F/B	120"-75" [3048mm-1905mm]
Min. Sheet Size L/R - F/B	36"-30" [914mm-762mm]
Max. Loader Pass Height (From Top of Bolster)	64.5" [1638mm]
Min. Loader Pass Height (From Top of Bolster)	45.5" [1156mm]
Max Stack Height (Including Pallet)	20" [508mm]

UNLOADER

Parts can be turned over (180 degrees max.) between press 2883 and press 1601 using a floor mounted FLEX-4.10 programmable transfer system.
--

PRESS SPECIFICATION

P2883 (WAS 1600)

S02.011

Page:

4

of

9

Author:
J Martin

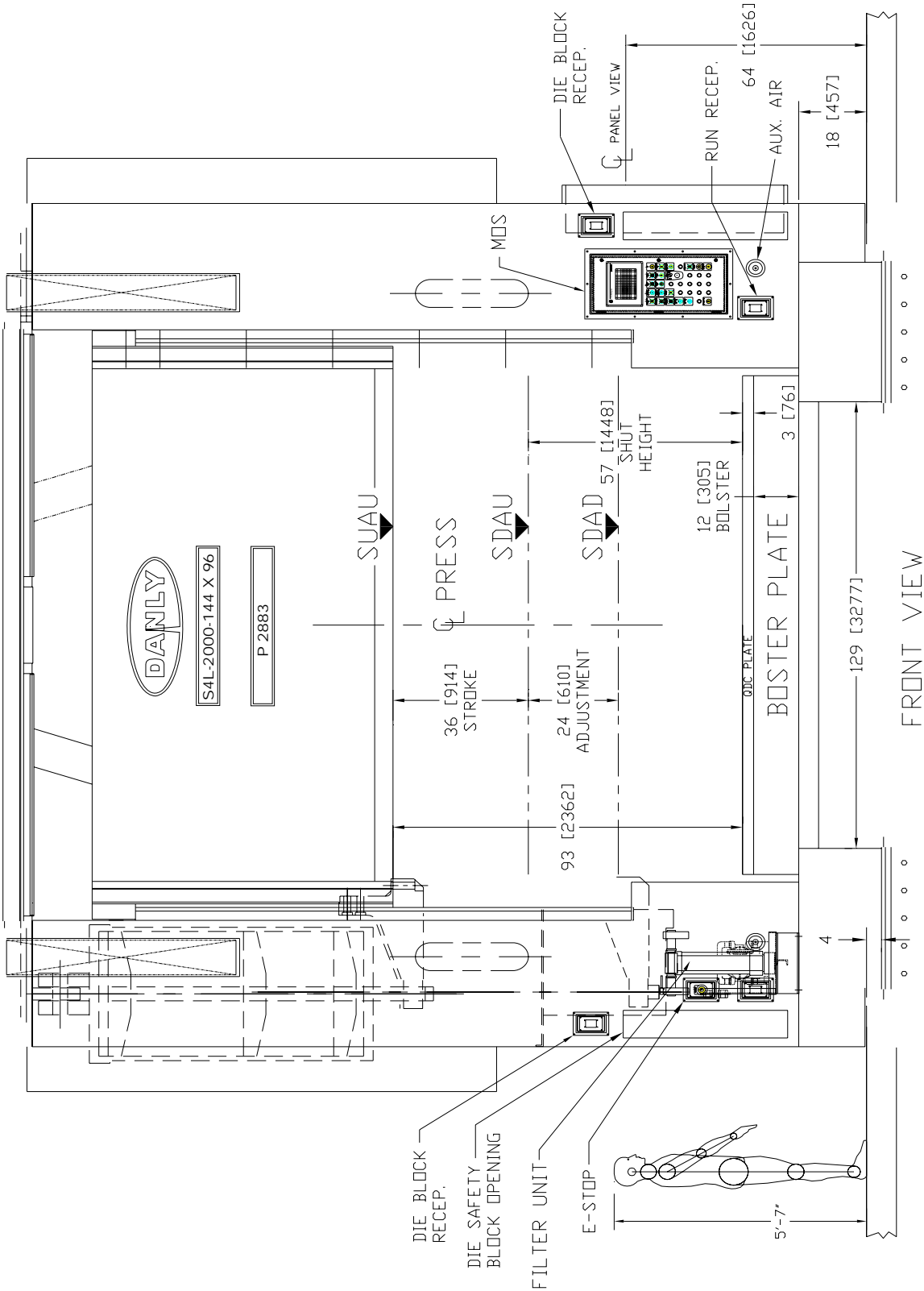
Reviewer
R Grimes

Approver
F Rutkowski

Issue Date:
24-Jan-2008

Rev. No.:
1

FRONT VIEW OF PRESS



PRESS SPECIFICATION

S02.011

P2883 (WAS 1600)

Page:

5

of

9

Author:
J Martin

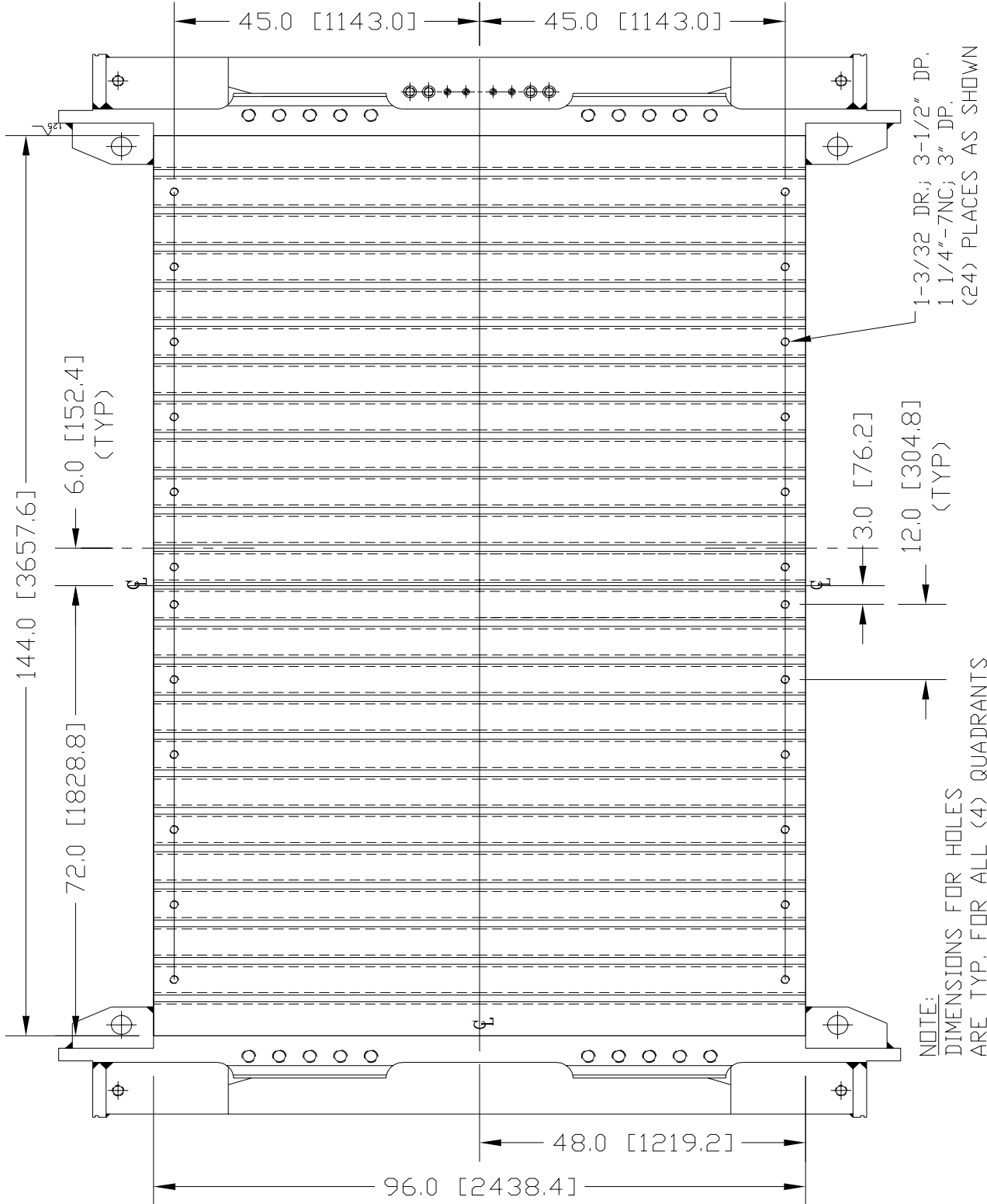
Reviewer
R Grimes

Approver
F Rutkowski

Issue Date:
24-Jan-2008

Rev. No.:
1

RAM PLATE



PRESS SPECIFICATION

P2883 (WAS 1600)

S02.011

Page:

6

of

9

Author:
J Martin

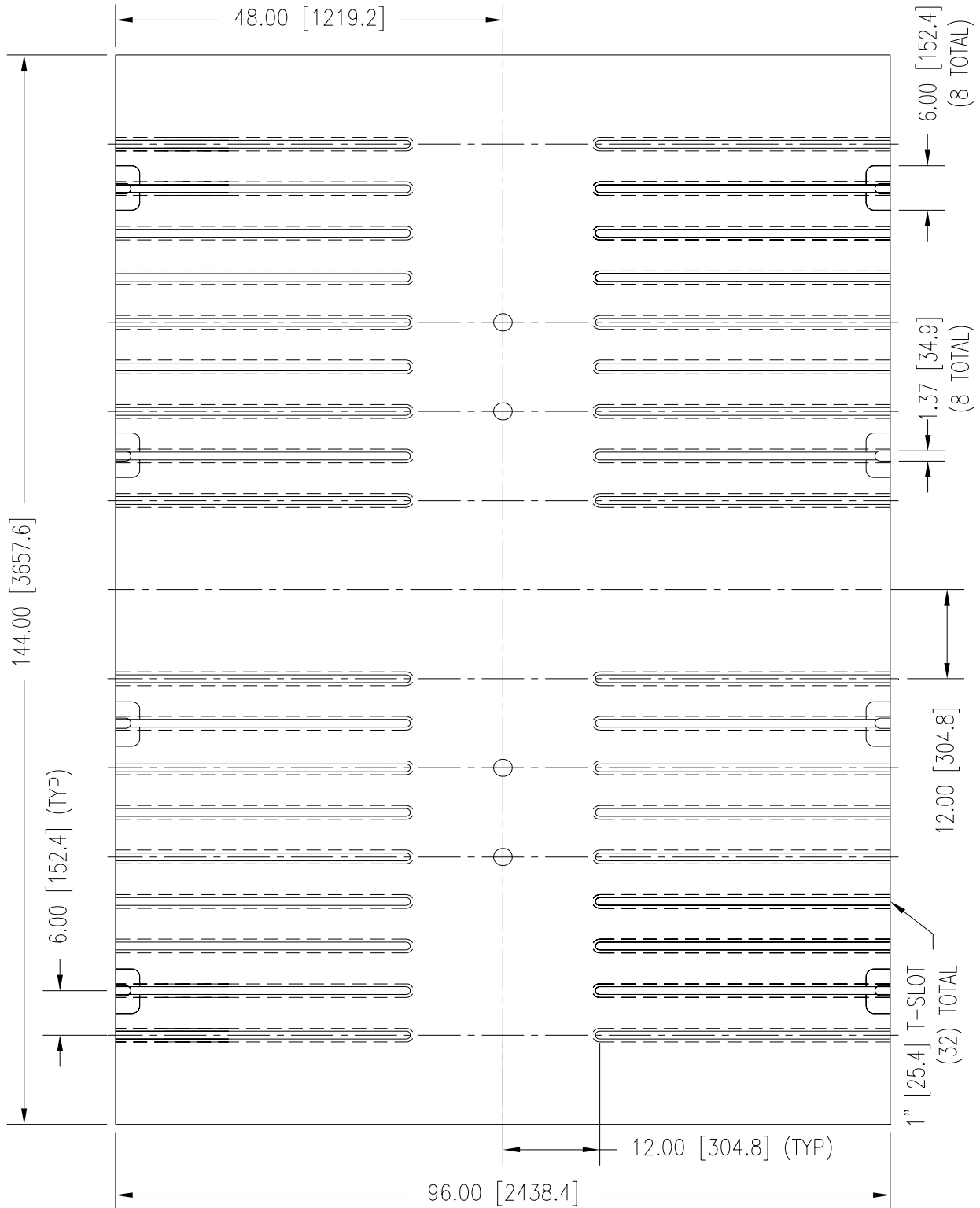
Reviewer
R Grimes

Approver
F Rutkowski

Issue Date:
24-Jan-2008

Rev. No.:
1

Q.D.C. PLATE



PRESS SPECIFICATION

S02.011

P2883 (WAS 1600)

Page:

7

of

9

Author:
J Martin

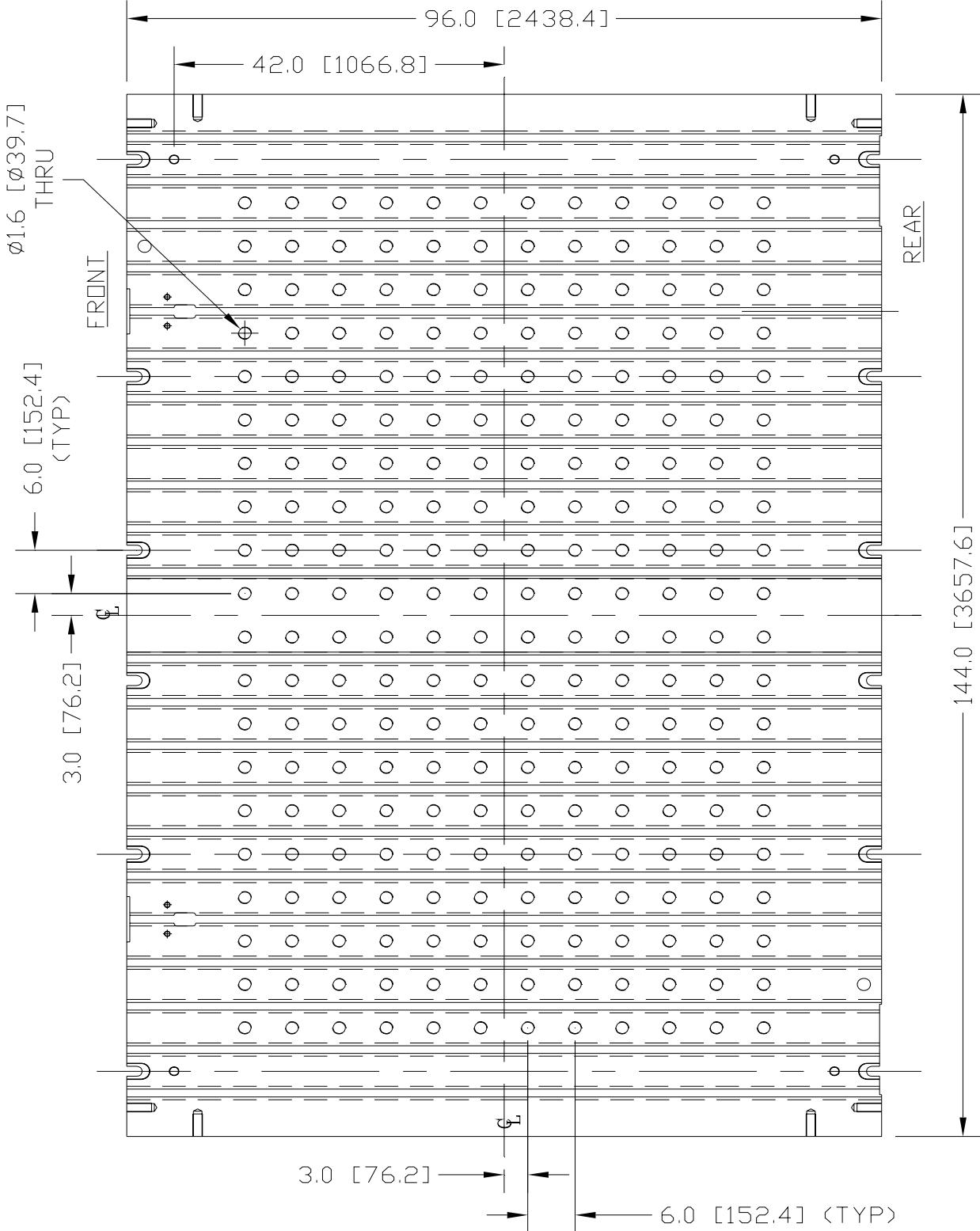
Reviewer
R Grimes

Approver
F Rutkowski

Issue Date:
24-Jan-2008

Rev. No.:
1

BOLSTER PLATE



PRESS SPECIFICATION

S02.011

P2883 (WAS 1600)

Page:

8

of

9

Author:
J Martin

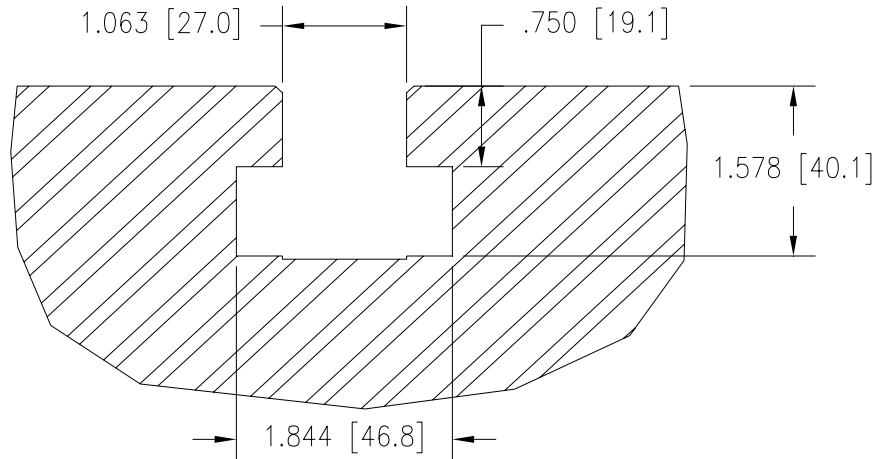
Reviewer
R Grimes

Approver
F Rutkowski

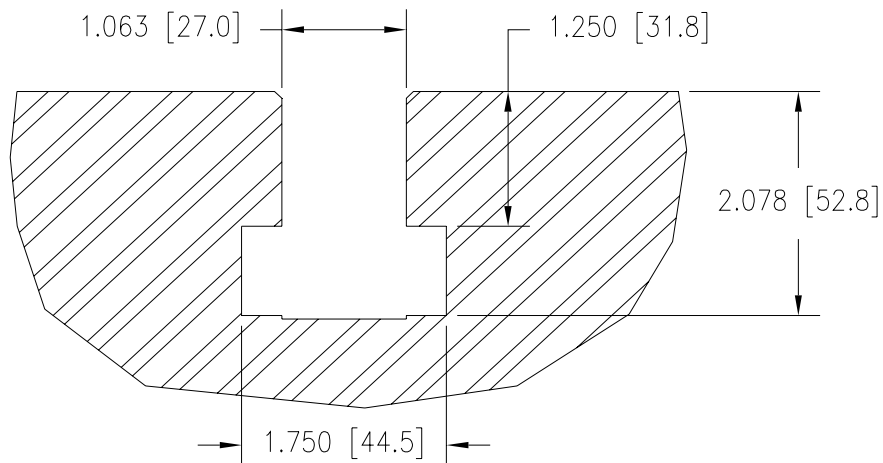
Issue Date:
24-Jan-2008

Rev. No.:
1

T-SLOT DETAILS



SECTION OF
Q.D.C. T-SLOT



SECTION OF
RAM T-SLOT

PRESS SPECIFICATION

S02.011

P2883 (WAS 1600)

Page:

9

of

9

Author:
J Martin

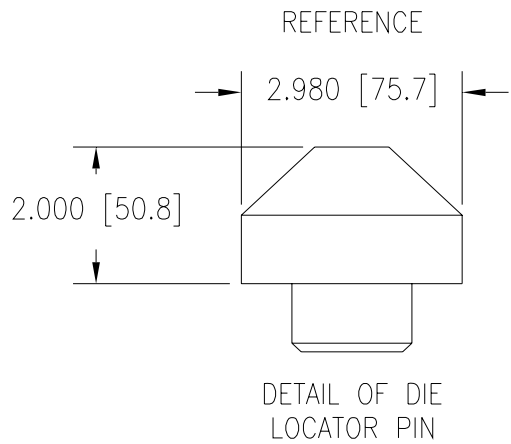
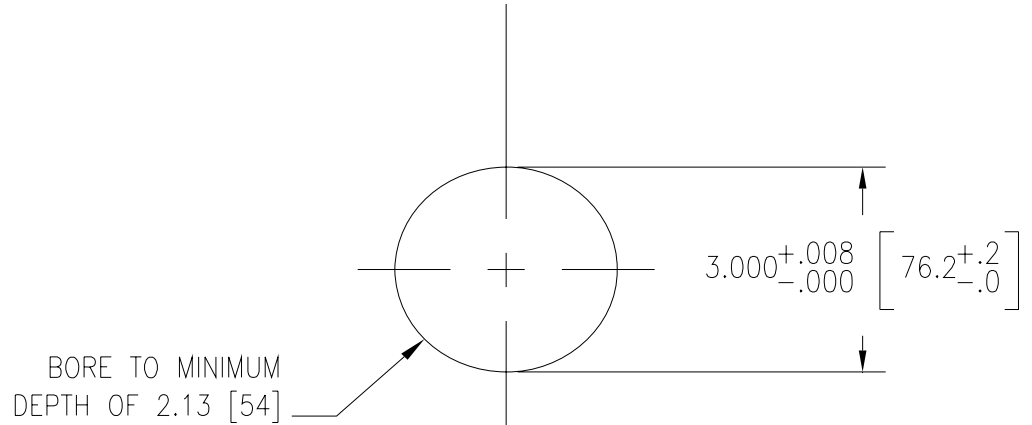
Reviewer
R Grimes

Approver
F Rutkowski

Issue Date:
24-Jan-2008

Rev. No.:
1

DIE LOCATORS



DETAIL OF DIE
LOCATOR HOLES

