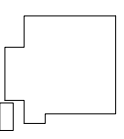




FROM ASHVILLE

TAKE I-26 EAST TO EXIT #417 (NEW CUT ROAD).
TURN LEFT OVER BRIDGE, AND GO APPROX. (2)
MILES. S.S.P. IS ON THE LEFT.

SPARTANBURG
STEEL PRODUCTS



WATER
TOWER



SPARTANBURG TECH
CAMPUS



NEW CUT ROAD

EXIT #3

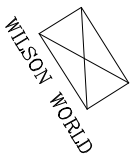
FAIRFOREST ROAD

PHONE # (864) 576-5220



RAMADA INN

EXIT #2C



WILSON WORLD

WE RECOMMEND THE WILSON WORLD HOTEL.
THEIR TELEPHONE NUMBER IS (864) 574-2111
WE CAN GET A CORPORATE RATE OF \$53.00 PER NIGHT

FROM THE AIRPORT

TAKE I-85 NORTH FROM GSP AIRPORT
TO SPARTANBURG. TAKE I-85 BUSINESS
NORTH TO EXIT #2C. TURN LEFT ONTO
FAIRFOREST ROAD. THEN TURN RIGHT ONTO
NEW CUT ROAD. SPARTANBURG STEEL WILL
BE ON THE LEFT.

TOTAL TRIP IS APPROX. 17 MILES. (20 MINUTES)

I-85 (BUSINESS)

GREENVILLE
GSP AIRPORT

SPARTANBURG STEEL PRODUCTS
1290 NEW CUT ROAD
SPARTANBURG, SC 29304
(864) 585-5216

COLUMBIA

I-85 (BYPASS)

I-26

EXIT #417

ASHVILLE